

LAND TRUST LIFE



NEIL UNGERLEIDER





Artichoke River Woods Celebration
WEST NEWBURY

Greenbelt collaborates with a wide range of government agencies, environmental organizations, community groups, trail associations, businesses, and individuals to fulfill its conservation mission.

We are deeply grateful to all of our partners for their shared commitment, which strengthens our ability to protect natural spaces and ensure their lasting preservation for future generations.

Greenbelt works in partnership with a wide range of federal, state, and local organizations to conserve land throughout Essex County.





JERRY MONKMAN/ECOPHOTOGRAPHY.COM



“Partnerships are fundamental to every aspect of conservation, and no one understands this better than Chris LaPointe, who stepped into the role of Greenbelt’s new President this past September. With more than two decades of experience in the field, Chris has cultivated many strong and enduring connections across the region to advance Greenbelt’s mission.”

Betsy Shields
Chair, Board of Directors

DEAR FRIENDS,

Partnerships are not only beneficial to Greenbelt’s conservation efforts, they’re essential.

By teaming up with a wide range of stakeholders committed to protecting Essex County’s vital natural habitats, farmland, and scenic landscapes, we are able to strengthen and amplify our conservation efforts, achieving results far beyond those we could on our own.

These partnerships also enable Greenbelt to reach new and diverse audiences, expanding access to green space and the health benefits of outdoor activity through a range of educational programs, recreational events, and volunteer opportunities.

While the mix and configuration of the partners we are working with at any given time is ever-changing, our intention is always the same: to build authentic, trusting relationships that leverage the strengths, expertise, and resources of all parties involved so we can work to achieve our shared goals.

By fostering these connections, Greenbelt is better equipped to tackle large-scale challenges such as biodiversity loss and the accelerating impacts of climate change.

When like-minded organizations work together, we also strengthen our collective voice in advocacy efforts, policy discussions, and the ability to generate support for our common goals and priorities.

At the heart of these partnerships is the unwavering support of our generous donors.

Your contributions provide the essential resources needed to nurture existing relationships, forge new connections, and ensure the success of our conservation initiatives. Together, we are creating a lasting impact on the future of our environment and the communities we serve.

In recognition of our collective achievements, this issue of Land Trust Life proudly showcases a broad sampling of the exceptional partnerships that make our conservation work possible.

With sincere appreciation,

Chris LaPointe
Greenbelt President

Cover Photos:
Indian Hill Farm fall foliage; State Reps.
Dawne Shand and Adrienne Ramos at
the Artichoke River Woods celebration;
Cell Signaling volunteers at Tour de
Greenbelt; Osprey monitor John
Sayre-Scibona banding fledglings

WHERE LAND & WATER MEET

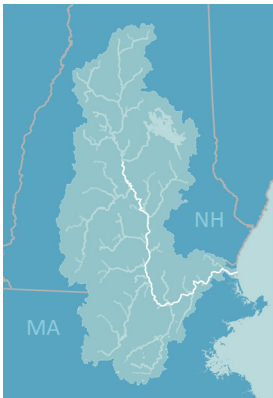
United in Protecting Vulnerable Resources

Partnership Collaborates to Preserve Watershed

The Merrimack Conservation Partnership is a broad coalition of environmental organizations and public agencies spanning New Hampshire and Massachusetts, working together to develop a science-driven, consensus-based conservation plan for the Merrimack River watershed.

“While Essex County’s share of the Merrimack River watershed is relatively small, Greenbelt is excited to be part of this conservation effort, which has made significant strides since 2010,” says Vanessa Johnson-Hall, Director of Land Conservation. “Over the past decade, we’ve completed 65 projects, conserving more than 1,300 acres in the watershed area, which includes Amesbury, Haverhill, Merrimac, and West Newbury. These efforts have helped protect essential habitats, drinking water sources, and recreational land in these communities.”

To help fund this work, Greenbelt has been awarded more than \$100,000 in support from the Merrimack Conservation Partnership Transactional Grants Program, supporting numerous projects in the region.



**GREENBELT’S
MERRIMACK RIVER
WATERSHED PROJECTS**

- AMESBURY
 - Jackson Lumber
 - Van Bokkelen
 - Whittier Hill Conservation Area
- HAVERHILL
 - Anton CR
 - Corliss Hill
 - Crystal Lake Watershed
 - Parsonage Hill
- MERRIMAC
 - Beaver Pond Reservation
 - Hoyt Farm
- WEST NEWBURY
 - Artichoke River Woods
 - Corliss Hill Conservation Area
 - Evergreen Farm
 - River Road Conservation Area



In 2010, the U.S. Forest Service designated the Merrimack River as one of the nation’s most threatened watersheds, citing the projected loss of private forestland over the next two decades.

JERRY MONKMAN/ECOPHOTOGRAPHY.COM

“The Merrimack Conservation Partnership has played a huge role in bringing together organizations from across state lines to work together to preserve watershed lands.”

Vanessa Johnson-Hall
*Director of Land Conservation
Greenbelt*



A Collaborative Effort to Restore the Great Marsh



This fall, State Representative Kristin Kassner convened a group of state legislators and conservation experts at the Crane Estate to discuss efforts to restore the Great Marsh. Governor Healey and Lieutenant Governor Driscoll were among those in attendance, and Greenbelt's President, Chris LaPointe, was one of the featured speakers.



The Great Marsh
— a coastal treasure in our backyard —

A collaborative restoration effort is underway to restore thousands of acres of the Great Marsh in Essex, Ipswich, Newbury, and Rowley. By restoring natural hydrology, this project aims to bolster the marsh's ability to adapt to rising sea levels, safeguard wildlife habitats, and strengthen the region's climate resilience.

Supported by the Trustees of Reservations, U.S. Fish & Wildlife Service, MassWildlife, and Mass Audubon, Greenbelt-owned marshland plays a key role in the restoration efforts.

"While our partners lead the technical aspects and implementation of the restoration, we've provided crucial land value match, leveraging federal grants that fund much of the effort," explains Chris LaPointe.

Greenbelt and IRWA Benefit from Decades of Collaboration

Greenbelt and the Ipswich River Watershed Association (IRWA) have maintained a trusted partnership for decades, advancing shared policy goals, collaborating on land conservation efforts, and working together to protect the Great Marsh and other vital resources.

Most recently, Greenbelt and IRWA united to protect Lynnfield Woodlot, a critical parcel in the upper reaches of the Ipswich watershed. While Greenbelt worked to raise funds to permanently protect these 21 acres, IRWA played a pivotal role in raising awareness within the community about the importance of such land for safeguarding water resources.



Lynnfield Woodlot
LYNNFIELD

NEIL UNGERLEIDER

"Our partnership with Greenbelt has greatly enhanced the capabilities of both organizations, enabling us to advance our shared mission to protect natural environments across Essex County."

Ken MacNulty
Board President
IRWA

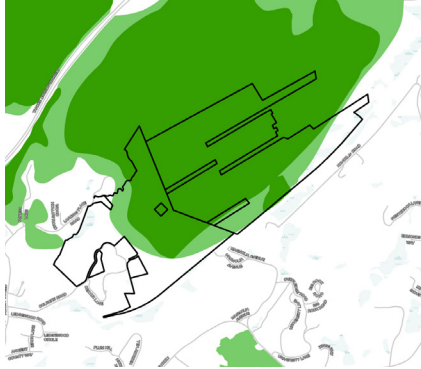


PARTNERS IN STRATEGIC CONSERVATION

Leveraging Scientific Data & Academic Expertise to Enhance Greenbelt’s Impact



JERRY MONKMAN/ECOPHOTOGRAPHY.COM



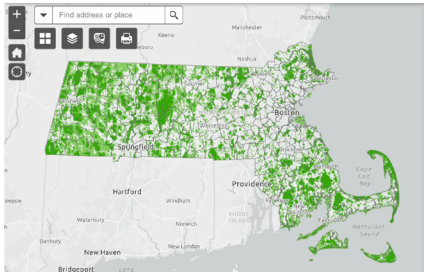
BioMap data was used to identify the Core Habitat and Critical Natural Landscape areas for our current DeNormandie Woods/Long Hill land conservation project

BioMap Data Drives Strategic Planning

Having access to the most current and comprehensive data on climate-resilient ecosystems, vulnerable species, and at-risk wildlife habitats across Essex County is essential to Greenbelt’s conservation planning. To support this critical work, BioMap — developed by MassWildlife and The Nature Conservancy — serves as an indispensable tool.

BioMap data enables Greenbelt to strategically target potential conservation projects, emphasizing areas that enhance local climate resilience or protect habitats for rare species. Additionally, this data aids in securing vital funding by clearly demonstrating the conservation value of these initiatives.

Once a property is conserved, Greenbelt staff will utilize BioMap data to inform property management plans, ensuring that the latest scientific insights are integrated into every aspect of long-term planning.



BioMap provides statewide conservation and resilience data



“Continued collaboration with The Nature Conservancy experts has been invaluable to Greenbelt’s conservation prioritization work.”

Abby Hardy-Moss
Greenbelt Vice President
Stewardship, Planning & Technology

Bridging Academia & Conservation



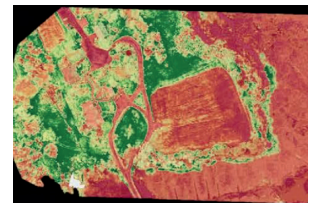
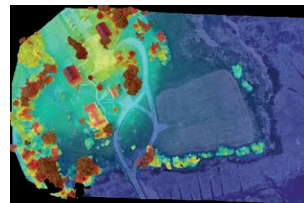
The partnership between Greenbelt and Salem State University (SSU) exemplifies a thriving relationship rooted in mutual learning and collaboration. **Since the launch of Greenbelt's Geo-Information Science (GIS) internship program in 2013, this two-way alliance has flourished, providing valuable real-world experience for students while contributing to Greenbelt's broader conservation efforts.**

Over the past 12 years, Greenbelt's internship program has engaged more than a dozen SSU students, four of whom have transitioned into full-time roles, highlighting the program's success. Currently, Becca Smalley, GIS Specialist; Jeannette Miranda, Land Conservation Fellow; and Jason Risberg, Database Intern, have all joined the Greenbelt team through Salem State University.

This partnership also extends beyond internships, with SSU students contributing to conservation mapping, research, and database management projects. SSU faculty have also taken part in a Greenbelt climate change video, served on a conservation prioritization advisory panel, and presented at various events.

"As a student at Salem State, the GIS Internship Program at Greenbelt provided me with an incredible opportunity to gain hands-on experience in the conservation field and enhance my technical skills, ultimately leading to a full-time position!"

Becca Smalley
Greenbelt GIS Specialist
Former SSU Intern



SSU Connection: Greenbelt GIS team members (l to r) Jason, Becca, and Jeannette utilize drone technology to improve mapping accuracy and efficiency.

GETTING OUTSIDE TOGETHER!

Inspiring New Communities to Connect with Nature



EMMA FRINGUELLI

Dan Small, Head Ranger of Lynn Woods Reservation, led a joint walk in the woods with Greenbelt in September exploring scenic trails, lush forests, and tranquil ponds while sharing the park's remarkable history.



Greenbelt and Lynn Museum Team Up to Promote Engagement

Located in a vibrant urban neighborhood known for its rich history, creative energy, and diverse population, the Lynn Museum and Art Center serves as a cultural hub for the region. Each year, the dynamic nonprofit offers exhibitions and public programs designed to draw in, educate, and inspire visitors from across the city and beyond.

Building on this commitment to community engagement, the Lynn Museum and Greenbelt have partnered since 2022 on a range of events, including a film screening and lecture, as well as three successful guided walks in Lynn Woods.

"Greenbelt's work in our community makes our partnership feel natural," says Doneeca Thurston-Chavez, Lynn Museum's Executive Director. "We love to collaborate, and Greenbelt has been a supportive and energetic partner."

The Lynn Woods walks have been especially well received and are now an annual event. "Participants range from lifelong Lynners who have grown up visiting the woods to newcomers eager to explore the trails," says Doneeca.

This shared appreciation for Lynn Woods was further deepened in 2023, when its permanent protection was secured. With Greenbelt's assistance, a Conservation Restriction now safeguards the land from development, ensuring it remains available for public enjoyment and continues to serve as a vital source of drinking water.

"Greenbelt's work in our community makes our partnership feel natural."

Doneeca Thurston-Chavez
Executive Director,
Lynn Museum





Christine Kwitchoff
Team Haverhill member
Greenbelt volunteer



“Our collaboration with Greenbelt on the ‘Let’s Hike Haverhill’ series has raised awareness of Haverhill’s incredible green spaces and trails while providing new outdoor activities for residents.”



Greenbelt and Team Haverhill launched a joint trail series in 2022, offering free guided walks that introduce residents to trails throughout Haverhill.

Discovering the Power of Conserved Spaces

Several years ago, as Greenbelt undertook efforts to conserve the 88-acre Crystal Lake Watershed in Haverhill, a lasting and valuable partnership was forged with Team Haverhill — a dynamic community group devoted to enriching the quality of life for the city’s residents.

“Team Haverhill’s passion for Haverhill and commitment to strengthening community connections have made them enthusiastic supporters of all our efforts in the area,” says Rachel Horgan, Director of Development and Community Engagement.

This collaboration has led to more than a dozen co-led events in the past year, enhancing community ties and deepening appreciation for conserved land.



Shared Commitment to Trails

Greenbelt and the Essex County Trails Association (ECTA) share a strong commitment to outdoor recreation and a common geographic focus, resulting in numerous successful collaborations on land conservation, trail easements, and trail management.

ECTA also plays a vital role in maintaining many of the trails on Greenbelt properties, ensuring they remain safe, well-maintained, and easily accessible year-round.

Sagamore Hill Conservation Area
Trail Enhancements

“Essex County Trail Association has a long history of collaborating with Greenbelt due to our shared interest in preserving and maintaining the trails on our stunning and diverse local landscapes.”

Martha Sanders
Chair, Board
of Directors
ECTA



PEOPLE AS PARTNERS

Volunteers Power Greenbelt’s Success

200+

Greenbelt’s vibrant community of more than 200 active volunteers brings remarkable energy, enthusiasm, and dedication to all areas of our conservation efforts, collectively contributing thousands of hours per year. From helping maintain properties and restoring habitats to assisting with mailings and supporting events, their commitment fuels a wide range of essential activities. Volunteers not only extend the reach of Greenbelt’s mission by fostering community ties and raising awareness, but they also inspire others to get involved.

JUMP RIGHT IN!
ecga.org/volunteer



NEIL UNGERLEIDER



Whether it’s hands-on fieldwork, community outreach, or event support, there’s a volunteer role for every nature lover at Greenbelt!



Osprey monitor Emerson Dahmen observes an active nest from the Greenbelt skiff

Citizen Scientists Monitor Osprey Population

One highly engaged subgroup within Greenbelt’s broader volunteer community is the Osprey nest monitors. Between the months of April and August, these citizen scientists “adopt” one or more nests, visiting weekly to observe and document nesting and breeding behavior. The data they gather plays an important role in research and public education efforts focused on safeguarding this remarkable, once-endangered species.

Lobsta Land in Gloucester also plays an unexpectedly important role in Greenbelt’s Osprey Program. Since 2018, the popular seafood restaurant has hosted the OspreyCam on a nesting platform located on Greenbelt property visible from its back deck. This unique partnership enables thousands of viewers, both near and far, to experience the majestic birds in their natural habitat.



LOBSTA LAND

Lobsta Land owner and bird enthusiast, Cory Grammas (left) with Dave Rimmer, Greenbelt Director of Stewardship



Corporate Conservationists prepare the Hamilton Wenham Community Garden at Dodge Farm in Wenham

Committed Corporate Conservationists

Greenbelt’s growing Corporate Conservationist Program offers area businesses a unique opportunity to engage in local conservation efforts while fostering team spirit and a shared sense of purpose among employees.

“Our corporate volunteers make a meaningful impact in many ways — whether they’re clearing trails, supporting public events, or launching their own initiatives,” says Rachel Horgan, Director of Development and Community Engagement. “It’s also a great opportunity for businesses to demonstrate their commitment to environmental stewardship and deepen their connections within the community.”

AMG

Cell Signaling
TECHNOLOGY®

EBSCO

 **INSTITUTION
FOR SAVINGS**
BUILDING STRONGER COMMUNITIES TOGETHER SINCE 1820.

matter
A Brand Elevation Agency



Greenbelt

Essex County's Land Trust

PO Box 1026
Essex, MA 01929

ADDRESS SERVICE REQUESTED

Protecting land and nature
for you, our communities,
and the future

LAND CONSERVED! WHAT'S NEXT?

2024 Annual Fund

Conserving land is just the beginning!
Your gift to Greenbelt ensures that we can
fulfill our mission to steward and safeguard
vital natural resources now and forever.

ecga.org/annualfund

Enjoy our
2025 Greenbelt Calendar
with your Annual Fund gift
of \$150 or more



THE POWER OF PARTNERSHIPS

Working Together to Maximize Conservation Outcomes & Community Connections

DeNormandie Woods/Long Hill
MANCHESTER, GLOUCESTER